

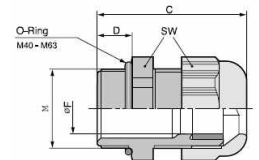
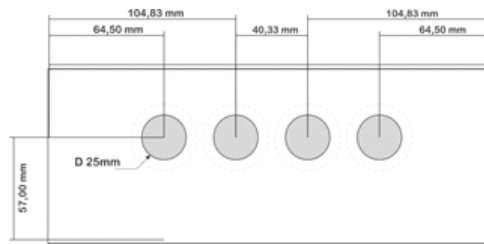
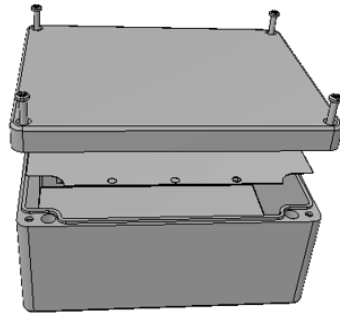
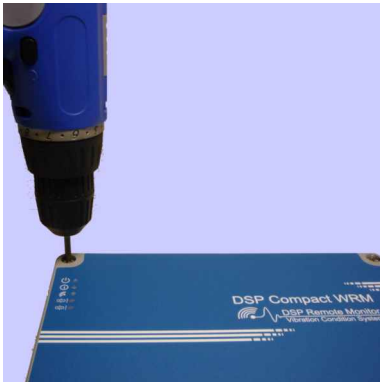


Conexionado de sensores

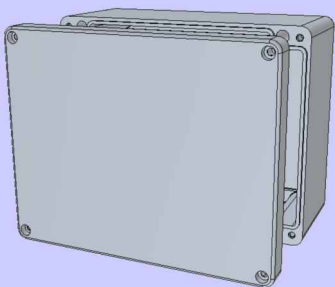
El diseño exterior del equipo DSP Compact WRM, ha sido desarrollado para lograr durabilidad en los mas agresivos ambientes industriales.

Su caja exterior de fibra de vidrio reforzada, de alto espesor y su pintura de recubrimientos epoxi, le permite ser altamente durable con grado de protección IP66, NEMA 4,4X,

Las entradas de los cables de sensores y comunicación, cuentan con pasacables de grado IP68, pudiendose cerrar por completo los que no son utilizados.



Clamping range ØF mm: 9-17
 SW mm: 30
 C mm: 40.0
 D mm: 10.0



File #E65324 NEMA 4, 4X

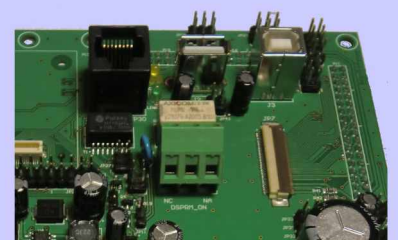
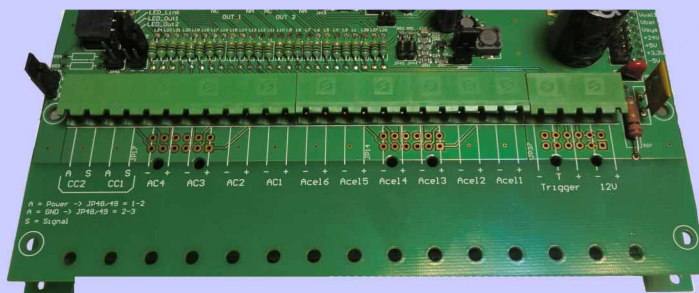
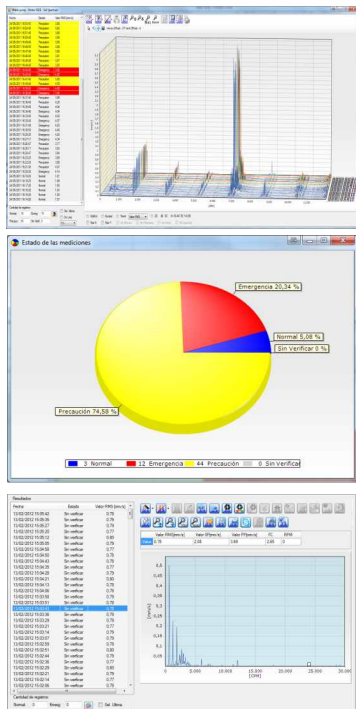


Diagrama general de conexionado



Fecha	Estado	Valor RMS [mm/s]	Valor OP [mm/s]
13/02/2012 14:02:21	Se verifica	0.78	
13/02/2012 14:02:26	Se verifica	0.80	
13/02/2012 14:02:30	Se verifica	0.79	
13/02/2012 14:02:35	Se verifica	0.79	
13/02/2012 14:02:40	Se verifica	0.80	
13/02/2012 14:02:45	Se verifica	0.79	
13/02/2012 14:02:50	Se verifica	0.80	
13/02/2012 14:02:55	Se verifica	0.79	
13/02/2012 14:03:00	Se verifica	0.80	
13/02/2012 14:03:05	Se verifica	0.79	
13/02/2012 14:03:10	Se verifica	0.80	
13/02/2012 14:03:15	Se verifica	0.79	
13/02/2012 14:03:20	Se verifica	0.80	
13/02/2012 14:03:25	Se verifica	0.79	
13/02/2012 14:03:30	Se verifica	0.80	
13/02/2012 14:03:35	Se verifica	0.79	
13/02/2012 14:03:40	Se verifica	0.80	
13/02/2012 14:03:45	Se verifica	0.79	
13/02/2012 14:03:50	Se verifica	0.80	
13/02/2012 14:03:55	Se verifica	0.79	
13/02/2012 14:04:00	Se verifica	0.80	
13/02/2012 14:04:05	Se verifica	0.79	
13/02/2012 14:04:10	Se verifica	0.80	
13/02/2012 14:04:15	Se verifica	0.79	
13/02/2012 14:04:20	Se verifica	0.80	
13/02/2012 14:04:25	Se verifica	0.79	
13/02/2012 14:04:30	Se verifica	0.80	
13/02/2012 14:04:35	Se verifica	0.79	
13/02/2012 14:04:40	Se verifica	0.80	
13/02/2012 14:04:45	Se verifica	0.79	
13/02/2012 14:04:50	Se verifica	0.80	
13/02/2012 14:04:55	Se verifica	0.79	
13/02/2012 14:05:00	Se verifica	0.80	

